

Milford Community Fire Department

**Concerns Related to Road Widths,
Parking, and Other Conditions
Affecting Safety Service Vehicle
Travel and Operation Within the
City of Milford**

Road Width Concerns

- Apparatus are 9' 4" including mirrors.
- Apparatus need room to maneuver and pass vehicles in an emergency.
- Apparatus require at a minimum 14' just for opening the doors to exit the vehicle.
- Narrow roads can hamper the ability for us to perform efficiently during an emergency, and on-street parking compounds the problem.

Road Width Concerns in the South Milford Area

- South Milford is a particularly tight area.
- Mound Avenue is a frequently traveled road by emergency vehicles and is difficult to travel and operate on due to parking on both sides of the street.
- In 1993 the Fire Department started raising concerns about the parking on both sides of the street during renovations to the area and recommended that Mound Avenue be made parking on one side only.
- In 2000 Cleveland Avenue was changed to one sided street parking, during renovations, for the same concerns.

Road Width Concerns in the South Milford Area

Parking on both sides hampers ability to operate.



Measured width from car to car was 16'

Milford Community Fire Department

Road Width Concerns in the South Milford Area



Oak Street



Hickory Street

Road Width Concerns in the South Milford Area



Mound Avenue

- Large vehicles with dual rear wheels, extended mirrors, utility beds, and trailers severely limit the lane of travel.
- Notice how far the red utility truck sticks out in the road compared to the blue passenger car in this picture.

Road Width Concerns in the South Milford Area



Oak Street turning North
in to Alley coming from
Mound Avenue



Apparatus can not clear turn due to
parking on Oak Street

Milford Community Fire Department

Road Width Concerns in the South Milford Area



Oak Street turning South
in to Alley coming from
Cleveland Avenue



Apparatus can not clear turn due to
parking on Oak Street

Milford Community Fire Department

Road Width Concerns in the South Milford Area



Parking on Oak Street at
Cleveland Avenue

Apparatus have difficulty making
turns when vehicles are parked
on this road.

Milford Community Fire Department

Road Width Concerns in the South Milford Area

Recommendations

- Eliminate Parking on the East side of Mound Avenue (This is the side toward Cleveland Avenue which also has the fire hydrants.)
- Make Oak Street and Hickory Street No Parking on both sides of the street

Parking Concerns

- On-street parking presents traveling and maneuverability issues by apparatus throughout the city.
- Parking near intersections is particularly a problem for apparatus making turns.
- Many marked parking spaces contradict the purpose of the Ordinances which is to allow 30' clearance from intersections for maneuverability.

Parking Concerns – Beech Street



Parking spaces on Beech Street at Maple Street

Apparatus have difficulty making turns when vehicles are parked in these spaces.

Parking Concerns – Beech Street



Parking spaces on Beech Street at High Street

Apparatus have difficulty making turns when vehicles are parked in these spaces.

Parking Concerns – Elizabeth St.



Parking on Elizabeth Street
at Lila Avenue



Apparatus have difficulty making
turns when vehicles are parked in
at this intersection.

Milford Community Fire Department

Parking Concerns – Garfield Ave.



Parking spaces on Garfield Avenue at Main Street



Apparatus have difficulty making turns when vehicles are parked in these spaces.

Parking Concerns – Garfield Ave.



Apparatus turning on to
Garfield Avenue from
Main Street



Apparatus have to stop and wait for
cars stopped at the traffic light to
move before completing a turn.

Milford Community Fire Department

Parking Concerns – Garfield Ave.



Parking spaces on Garfield
Avenue at Main Street

Parking Concerns – Locust Street



Parking spaces on Locust Street at Main Street

Apparatus have difficulty making turns when vehicles are parked in these spaces.

Milford Community Fire Department

Parking Concerns – Garfield Ave.



Apparatus turning on to
Locust Street from Main
Street

Apparatus have to stop and wait for
cars stopped at the traffic light to
move before completing a turn.

Milford Community Fire Department

Parking Concerns – Locust Street



Parking spaces on Locust Street at Water Street



Apparatus have difficulty making turns when vehicles are parked in these spaces.

Parking Concerns – Maple Street



Parking spaces on Maple Street at Main Street

Apparatus have difficulty making turns when vehicles are parked in these spaces.

Parking Concerns – Maple Street



Parking spaces on Maple Street at Lila Avenue

Apparatus have difficulty making turns when vehicles are parked in these spaces.

Parking Concerns – Maple Street



Parking spaces on Maple Street across from Beech Street



Apparatus have difficulty making turns when vehicles are parked in these spaces.

Milford Community Fire Department

Parking Concerns – Maple Street



Turning on to Maple Street
from Lila Avenue



Turning on to Maple Street
from Main Street with vehicle
at stop sign.

Milford Community Fire Department

Parking Concerns – Powhatton Dr.



Parking on Powhatton
Drive at Garfield Avenue

Parking Concerns

Recommendations

- Revise Ordinance 351.03(a)(7) to state “Within thirty feet, **on both sides of the street**, of the **stop bar to**, and upon the approach to, any flashing beacon, stop sign or traffic control device;”
- Eliminate pre-existing parking spaces that are within 30 feet of intersection stop bars.
- Eliminate parking directly across from intersections for 30 feet in both directions. (Ex: Maple Street across from Beech Street and Water Street across from Garfield Avenue)
- Equally apply and enforce above recommendations to all instances in the City.

Parking Concerns

Recommendations (Continued)

- Paint or repaint curbs yellow to reinforce no parking zones at intersections, crosswalks, and fire hydrants.
- Paint curbs yellow where Fire Department Connections for sprinkler systems or standpipes must be accessed from a public roadway. Revise Ordinance 351.03(a)(4) to include Fire Department Connections along with Fire Hydrants. (Ex: Maple Street, Main Street, etc.)



Roadway Obstruction Concerns

- Many locations throughout the City have obstructions which limit the lane of travel and parking (Trees, basketball hoops, rubbish, cars in residential areas that park in no parking areas, etc.)
- Low hanging obstructions (Trees, basketball hoops, etc.) that overhang the street cause damage to fire and ems apparatus and city service vehicles.

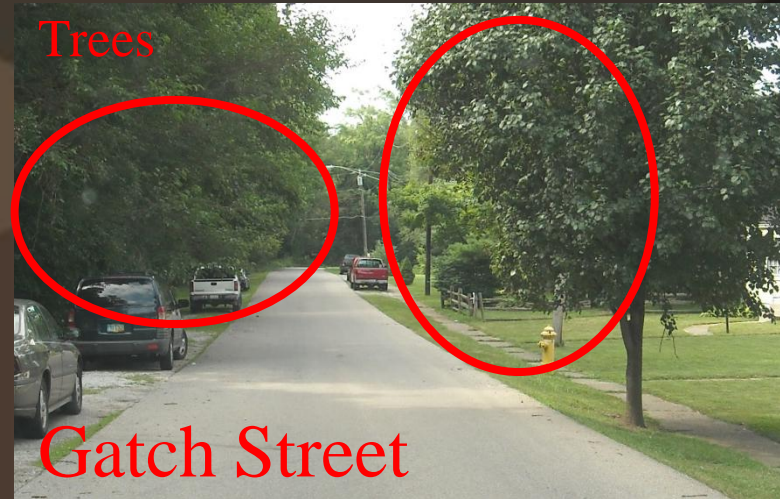
Roadway Obstruction Concerns



Roadway Obstruction Concerns



Roadway Obstruction Concerns



Roadway Obstruction Concerns



Roadway Obstruction Concerns



Roadway Obstruction Concerns



Roadway Obstruction Concerns



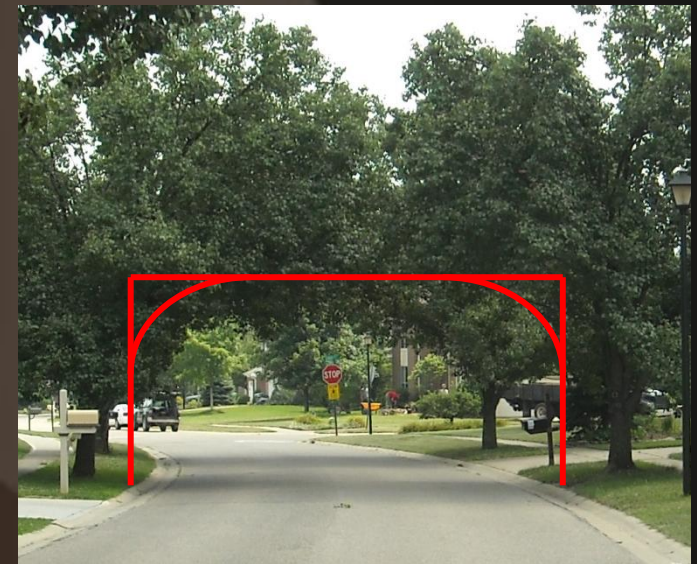
Roadway Obstruction Concerns



Roadway Obstruction Concerns

Recommendations

- Prohibit basketball hoops from protruding in to the street past a line vertical to the edge of the street or curb.
- Prohibit vehicle parking in cul-de-sacs.
- Set a standard for clearance of trees, overgrowth, structures, fences, etc from streets and alleys. (Ex: 13ft above and 1ft from outermost edge of street or alley)



Milford Community Fire Department

Thank you

**For any questions, concerns, or more
explanation please feel free to contact:**

John E. Cooper Sr. – Fire Chief

513.831.7777